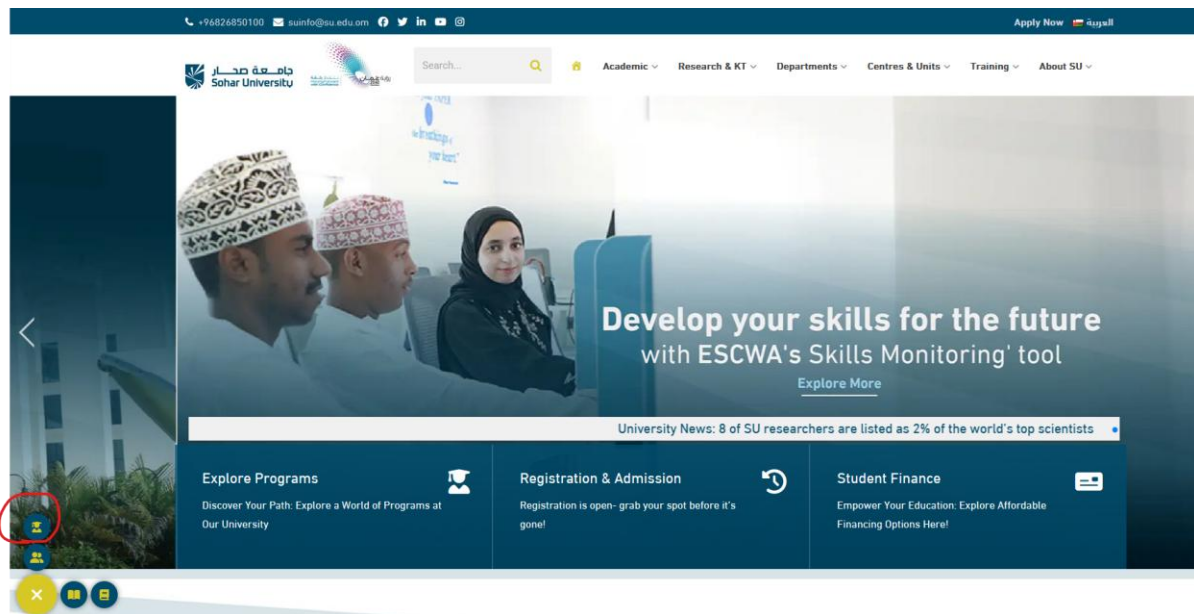


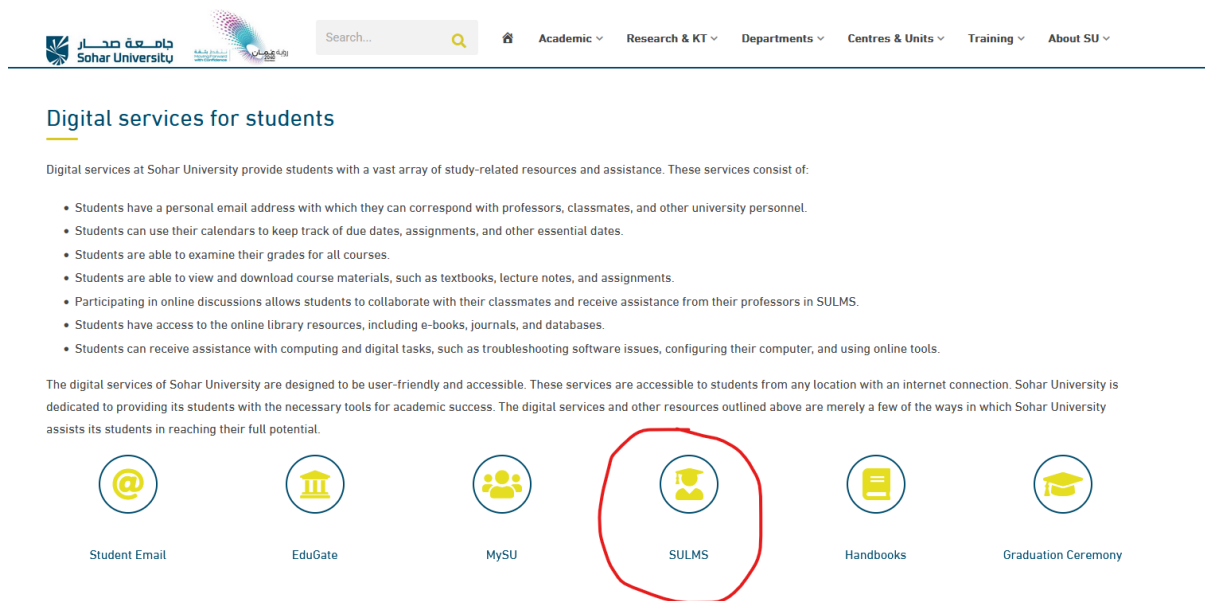


How to use SULMS Portal?

First: open university website <https://www.su.edu.om/> as shown.

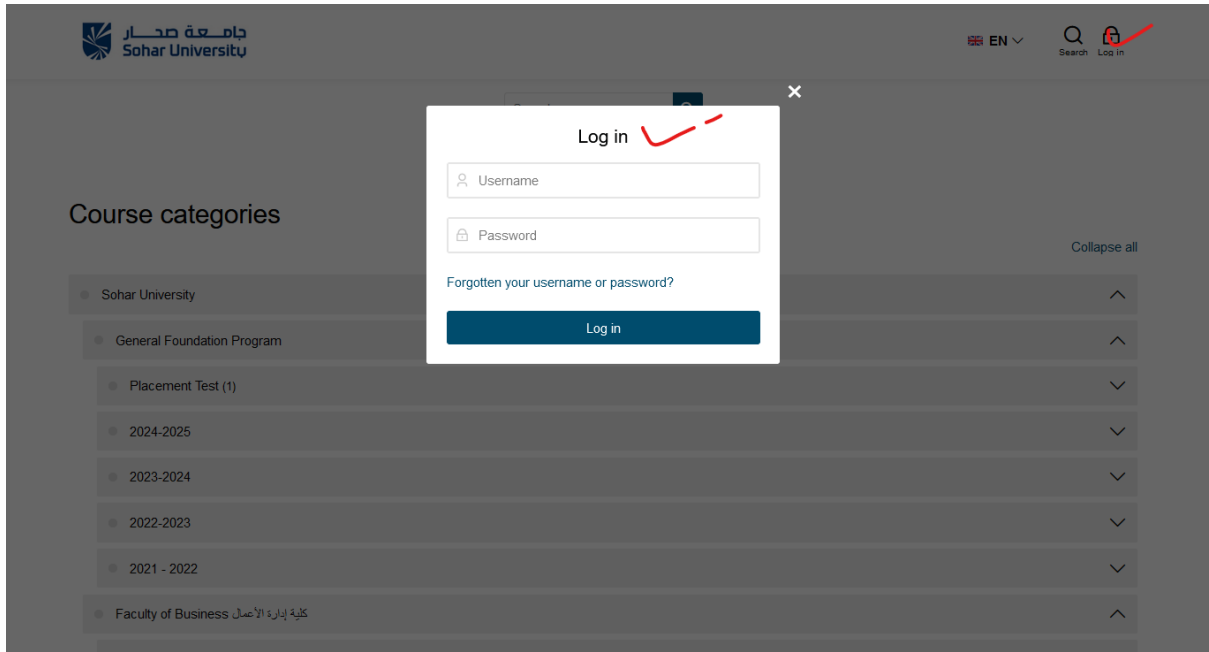


Click on the student icon as highlighted



Select SULMS Icon as shown above to navigate SULMS portal

Login with your university credentials



click on my courses then select from the options the course which you need to submit it assignment.

Course Participants Competencies

Announcements

Instructions: Clicking on the section name will show / hide the section.

- Module 1
- Assignments
 - Submit your assignment To do
 - Turnitin
 - Quiz
 - Section 5

Submit your assignment

✓ Done: View To do: Make a submission

Opened: Thursday, 9 January 2025, 12:00 AM
Due: Thursday, 16 January 2025, 12:00 AM

▼ Add submission

File submissions Maximum file size: 10 MB, maximum number of files: 1

↓

You can drag and drop files here to add them.

Save changes Cancel

Once you are ready with your document add your submission by dragging and dropping the files and then click on save changes to save your assignment

Submit your assignment

File picker

- Recent files
- Upload a file**
- Private files
- Wikimedia

Attachment

No file selected.

Save as

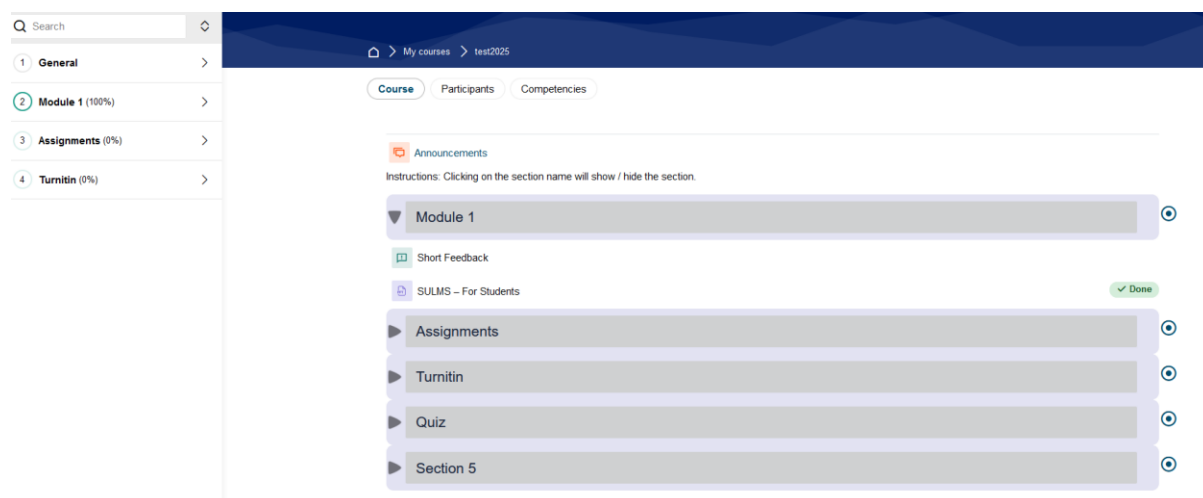
Author

Choose licence

All rights reserved

Add the attachment in upload a file and upload the file

Brief about the courses



Announcements:

- This section displays important updates, notifications, or reminders from your instructor.
- Check this regularly to stay informed about deadlines, changes, or other course-related announcements.

Modules (e.g., Module 1):

- These are the main learning sections where you'll find lectures, readings, videos, or other study materials.
- Click on the module name to expand and access its content.
- Some modules may also have interactive activities like forums or short feedback forms.

Assignments:

- This section contains tasks or projects you need to complete and submit.
- Pay attention to deadlines and follow the instructions provided by your teacher/instructor.

Turnitin:

- A tool for submitting written assignments to check for originality.
- Use this to upload essays or reports, ensuring they meet academic integrity guidelines.

Quiz:

- This section holds quizzes or tests to assess your knowledge on specific topics.

- Make sure to complete them within the assigned time frame.

Progress Tracking (e.g., "Done"):

- Certain tasks or sections will show a status indicator once you've completed them.
- Use this feature to monitor your progress and ensure you stay on track with the course requirements.

Navigation Menu:

- The sidebar on the left helps you jump between different sections quickly.
- It also shows progress percentages to let you know how much of each section you've completed.